

Editorial – „KISS“-Philosophy	page 14
Presentation of the co-authors	page 16
<b>Part I – An introduction to dental implantology</b>	<b>page 23</b>
<b>Part A – An introduction to implant prosthetics</b>	<b>page 24</b>
<b>Part B – Surgical training at the phantom</b>	<b>page 30</b>
1. The modules of surgery	
2. Modern implantology concepts in the phantom training <i>by Dr. Stephan M. Ryssel</i>	
3. Instruments for implant surgery	
4. Technology for augmentation and membrane technique	
5. The most important features of a modern implant system	
a. from a surgical point of view	
b. from a prosthetic point of view	
<b>Part C – Planning the implant</b>	<b>page 91</b>
1. Radiographic diagnostic	
2. Number of implants and pre-implantology extraction therapy	
3. Computer-aided planning <i>by Prof. (ECU) Dr. Christopher Schramm</i>	
<b>Part D – Classification for dental implantology</b>	<b>page 113</b>
<b>Part E – Gingival management – implant splinting – cementation – tooth-connection bonding bridge</b>	<b>page 115</b>
<b>Part F – Prosthetic training on the phantom</b>	<b>page 123</b>
Team approach in the implant prosthetic	

**Part II – Patient cases**

page 151

**CHAPTER I – CLASSIFICATION 2 C**

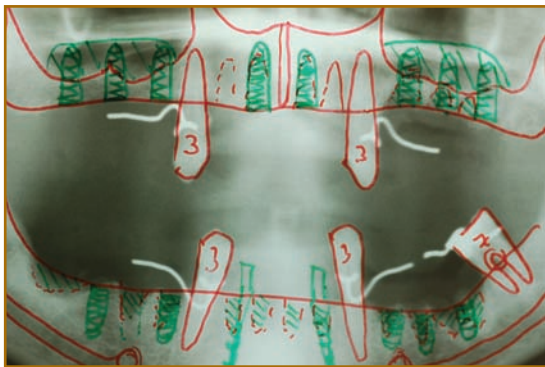
**The partially edentulous dentition –  
5 teeth or less**

page 152

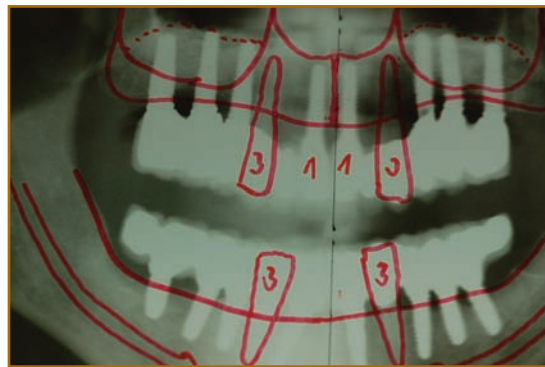
**PATIENT CASE I**

page 153

Planning protocol of a complex implant therapy of the extractions in the upper jaw and the lower jaw by long-term interim care and telescopes at the remaining teeth 13, 23, 33, 43, sinus lift surgery and a metal-free ceramic restoration with zirconium base.



orthopantomogram after extraction

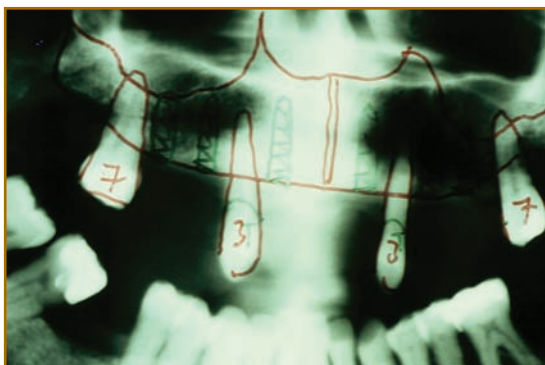


Fixed bridge construction upper jaw and lower jaw with telescope crown at 13-23, 33-34

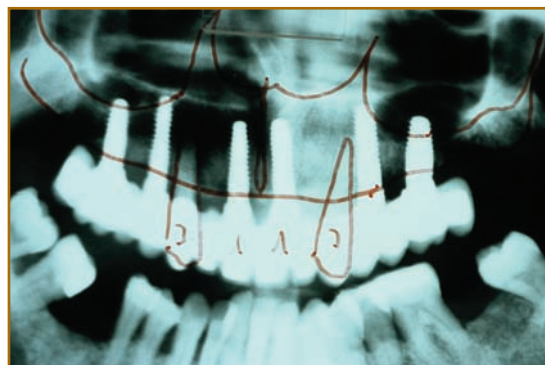
**PATIENT CASE II**

page 178

Multi-therapy-concept: Preparation of tooth – augmentation in one session. The patient comes into the office with a clasp prosthetic and leaves the office with a fixed acrylic bridge.



orthopantomogram (OPG) – state after extraction – 1 year before

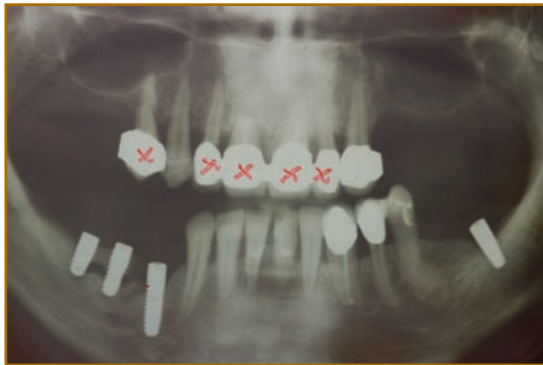


fixed bridge with telescopes 13-23

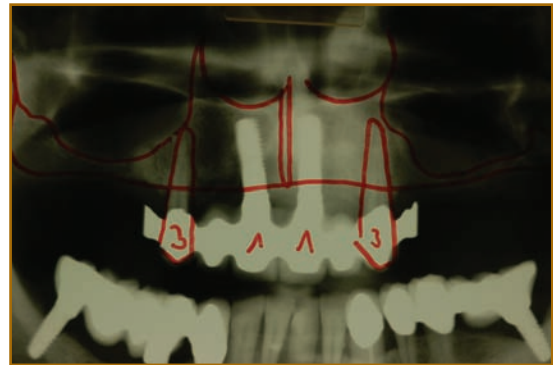
**PATIENT CASE III**

page 186

Cost-effective upper jaw provision by a fixed composite bridge between periodontally healthy canines and 2 anterior implants . Later the model casting can be exchanged by an implant in the posterior area after sinus augmentation by fixed ceramic bridges.



**OPG – before extraction  
in the upper jaw**

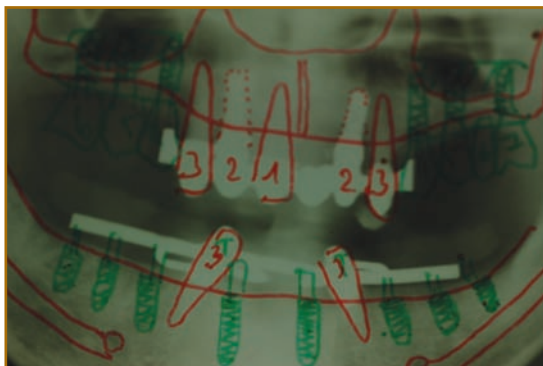


**Composite bridge in the upper jaw  
and attachment for model casting  
prosthetics**

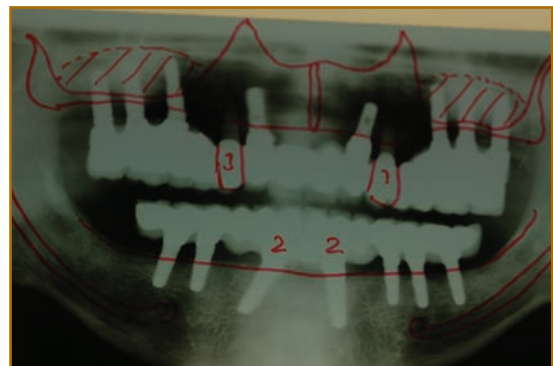
**PATIENT CASE IV**

page 192

Complex implant therapy in the upper jaw and lower jaw at a progenia after serial extraction before and bone augmentation with an upper jaw composite bridge in the anterior region.



**OPG – preview after extraction  
and interim care**

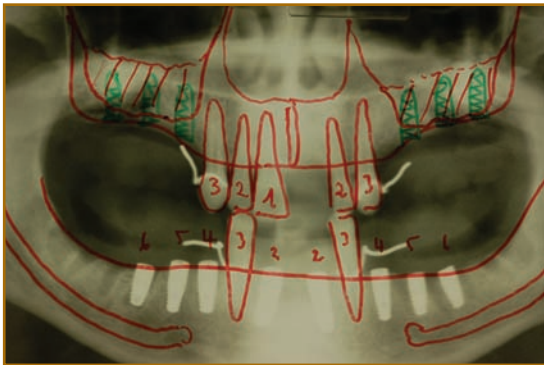


**Control-orthopantomogram  
after integration of the  
upper-under-jaw bridges**

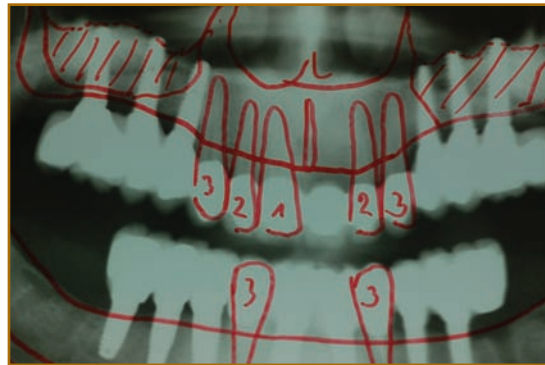
**PATIENT CASE V**

page 197

Complex provision after previous extractions in the upper and lower jaw with an anterior bridge with inclusion of the lower canines by telescope crowns.



**control-orthopantomogram  
after extraction surgery**



**OPG – final control of the fixed  
construction**

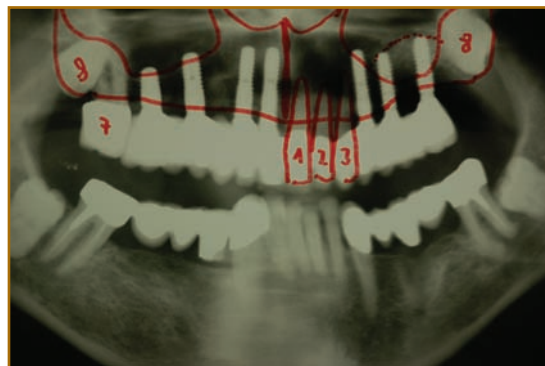
**PATIENT CASE VI**

page 207

Multi-Therapy-Concept: Extraction – Sinus augmentation – immediate implantation in one session – inclusion of the remaining teeth 17, 21, 22, 23 with a fixed ceramic bridge and small attachment joint to the implant bridges.



**Original-orthopantomogram**



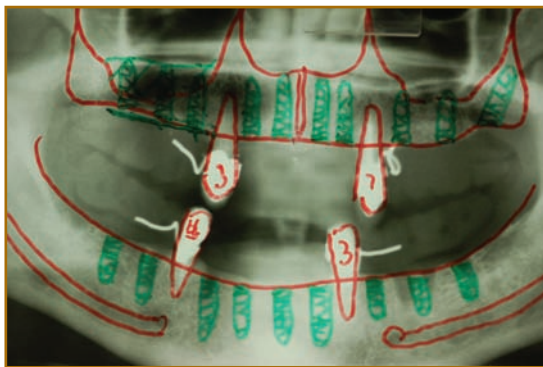
**Control-orthopantomogram**

**CHAPTER II – CLASSIFICATION 3**  
**Edentulous upper jaw and/or lower jaw**

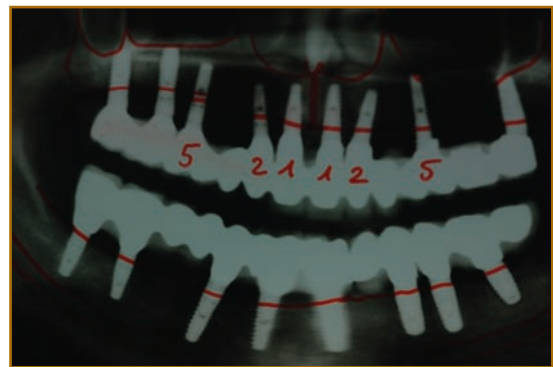
**Part A: Fixed Reconstruction** page 219

**PATIENT CASE VII** page 220

After extraction in the upper jaw and lower jaw, the periodontally involved remaining teeth 13, 23, 33 and 44 have been left as clasp abutments during the bone graft maturation and phase of osseointegration. The teeth were extracted in the implant opening session.



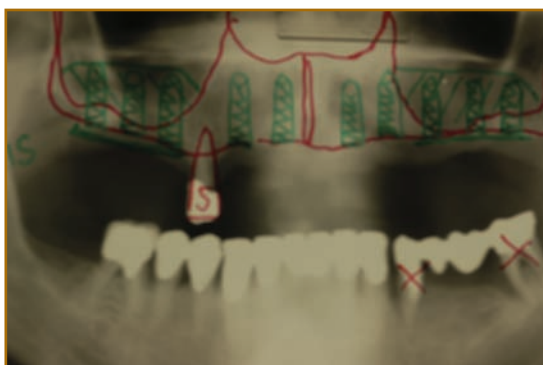
**Planning-OPG with clasp prosthetics after extraction in the upper jaw and lower jaw**



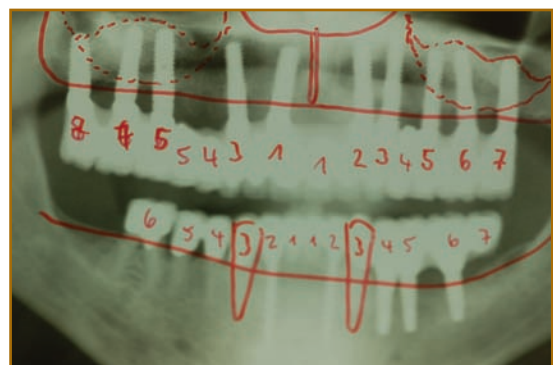
**control-OPG with bridge-construction in the edentulous upper jaw and lower jaw**

**PATIENT CASE VIII** page 225

After extraction-OP in the upper jaw only tooth 15 has been left - also after sinus lift – for fixation of the interim prosthetics until the implant opening.



**OPG after extraction in upper jaw**



**control-orthopantomogram**

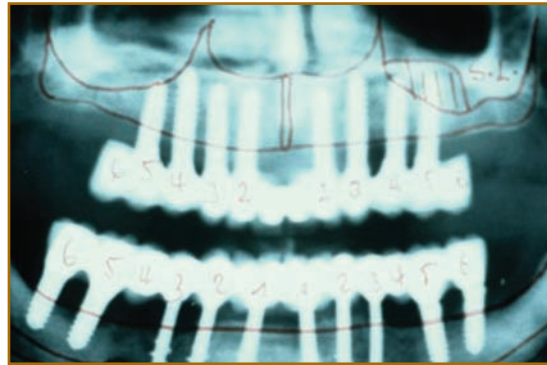
PATIENT CASE IX

page 233

Juvenile periodontitis at a 34 year old female patient.



OPG – before extraction in upper jaw and lower jaw

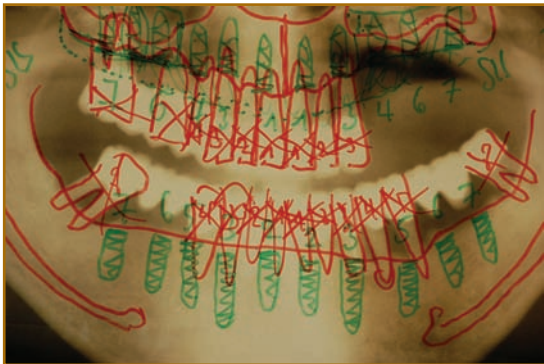


control-orthopantomogram (OPG) fixed bridge construction

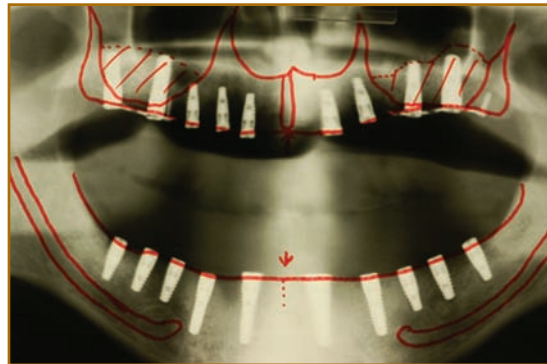
PATIENT CASE X

page 238

Serial extraction upper jaw and lower jaw – sinus lifts on both sides and SIS-rail for fixed provision.



before



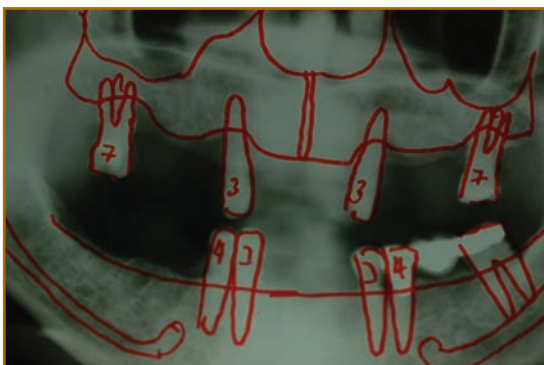
after

PATIENT CASE XI

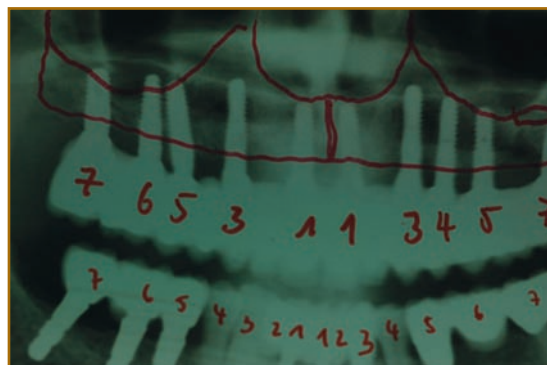
page 252

ZTM Bernhard Stübler

Metal-sheathed interim bridge after implantation of 10 implants in the upper jaw. After 6 months the final gold porcelain bridge has been constructed from the first impression.



before



after

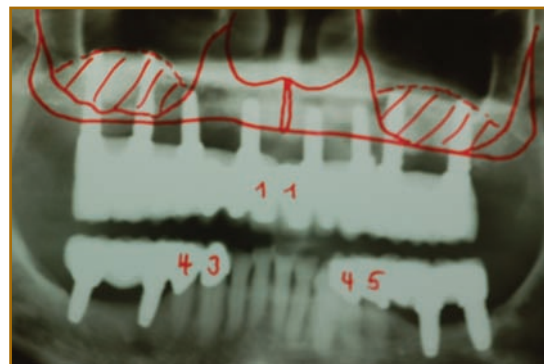
**PATIENT CASE XII**

page 277

Extraction-surgery – extensive bone augmentation with sinus lifts – fixed bridge – cantilever therapy at both sides in the lower jaw.



before



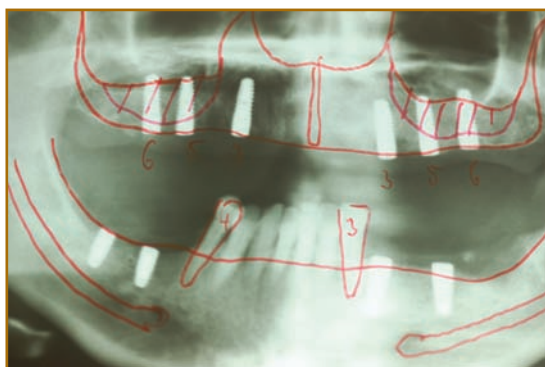
after

**PATIENT CASE XIII**

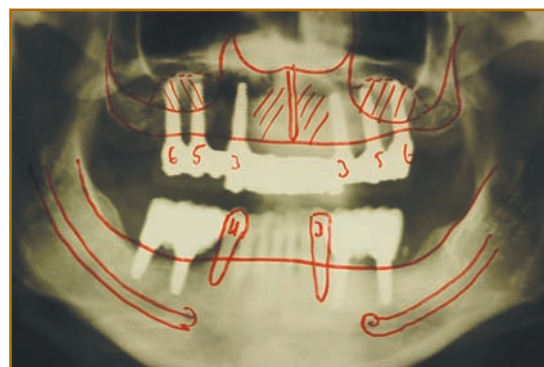
page 281

by Dr. Anne Gresskowski and ZTM Bernd Goller

Fixed bridge therapy with universal connection element UVE (prefabricated telescope abutment with screw joints) above 6 implants in the upper jaw and no cantilevers present at both sides in the lower jaw.



Control-OPG after implantation

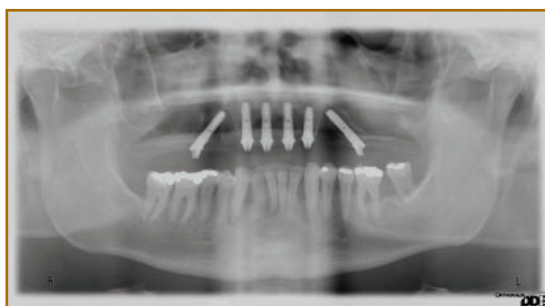


Final-orthopantomogram

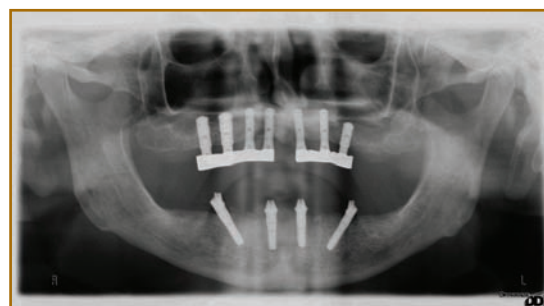
**IMMEDIATE RESTORATION AFTER THE FAST & FIXED CONCEPT**

by Dr. Georg Bayer

page 297



Immediate Restoration in the upper jaw with 6 implants



Fast + Fixed in the lower jaw with 4 implants immediately after extraction

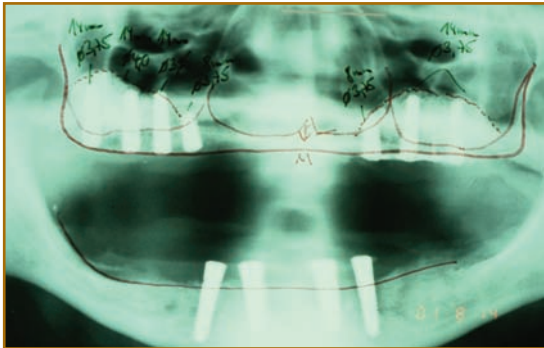
**Part B: Removable reconstruction**

page 310

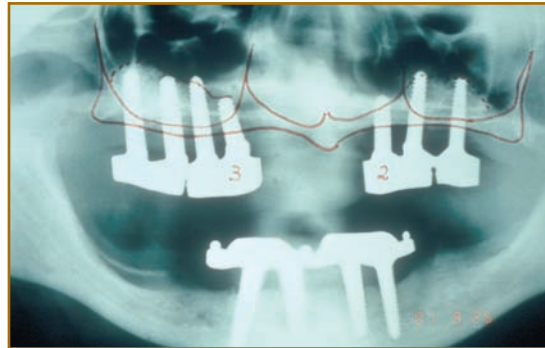
**PATIENT CASE XIV**

page 311

Extreme bone atrophy in the toothless upper jaw after wearing a complete denture prosthetic for more than 20 years.



OPG after implantation

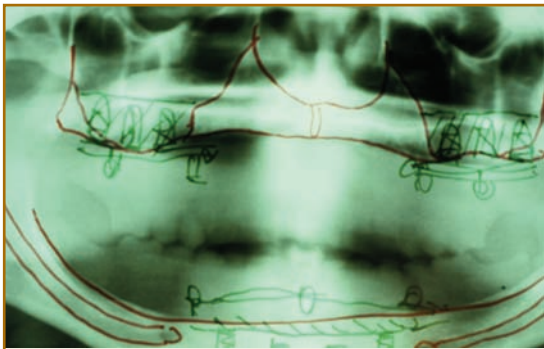


palate-free bar treatment

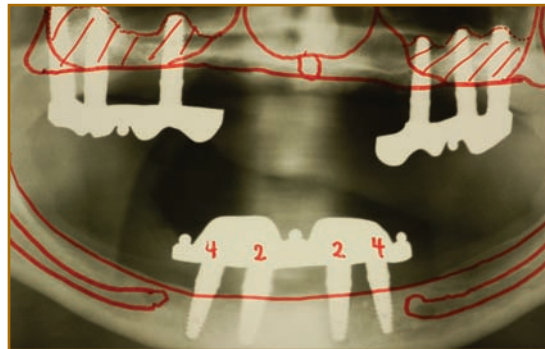
**PATIENT CASE XV**

page 314

Extreme jaw atrophy specially in the upper jaw sinus lift with crestal window access.



before

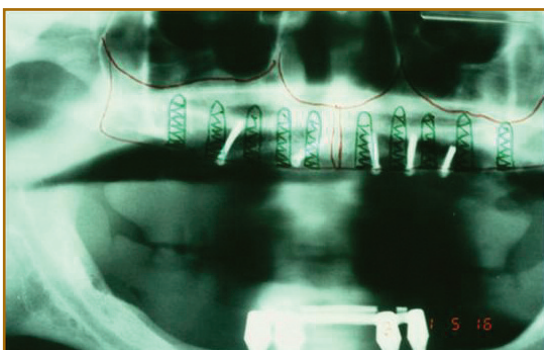


control with bar treatment

**PATIENT CASE XVI**

page 320

Block augmentation from the hip – also extreme jaw atrophy in the upper jaw and fixed bridge provision.



before

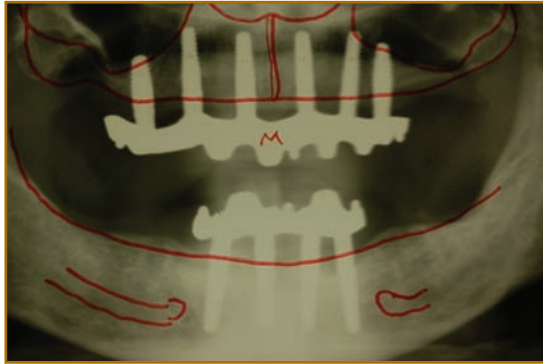


after

PATIENT CASE XVII

page 324

Toothless patient with classical indication for removable dentures – 6 implants in the upper jaw and 4 implants in the lower jaw.

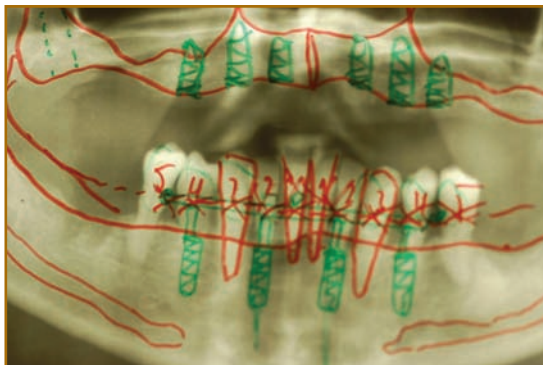


Bar construction upper jaw – lower jaw

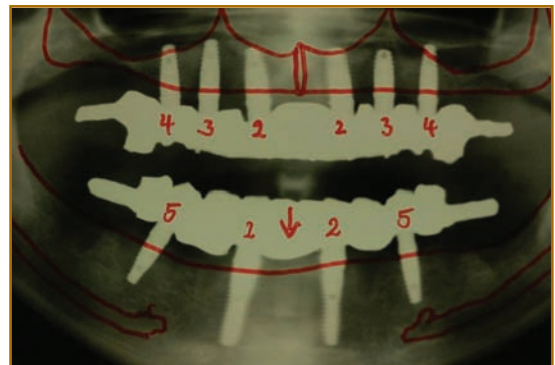
PATIENT CASE XVIII

page 327

The special case: A pathological gagger.



OPG – before extraction



OPG – bar construction in situ

## CHAPTER III – CLASSIFICATION 1

<b>Single tooth implant</b>	<b>page 331</b>
<b>Theoretical introduction into the single tooth implant placement</b> <i>by Dres. Anne Gresskowski and Jochen K. Alius</i>	<b>page 333</b>
<b>4 Patient cases</b> <i>by Dres. Anne Gresskowski and Jochen K. Alius</i>	<b>page 345</b>
<b>Aesthetics with Blue-Sky-Implants and Sky Uni.fit</b> <i>by Dr. Michael Weiss</i>	<b>page 375</b>
<b>Closing words</b>	<b>page 407</b>
<b>Epilog</b>	<b>page 409</b>
<b>Material list</b>	<b>page 412</b>